

- **Intuitive management interface**
- **Simple drag-and-drop VPN tunnel creation**
- **Interactive, real-time monitoring**
- **Comprehensive logging and reporting**
- **Flexible online and offline policy editing**
- **Centralized management of multi-box deployments**
- **Included with Firebox® X Core™ and Peak™ – no hidden costs**
- **Seamless LiveSecurity® integration**



Earth-friendly technology



Stronger Security, Simply Done™

## Security Management without the Confusion

WatchGuard® System Manager (WSM) provides administrators of simple or complex network environments with a powerful, intuitive interface to centrally manage multiple Firebox® X unified threat management (UTM) appliances including firewall, VPN, security subscriptions, and appliance software updates.

### WSM allows you to:

- Speed appliance provisioning with out-of-box templates and wizards for quick generation of configuration
- Launch configuration tools from a single location to achieve pinpoint control of any Firebox, VPN, or security subscription
- Easily configure site-to-site VPN tunnels. Drag-and-drop functionality and reusable policy objects save time and eliminate complexity
- Create and deploy configuration changes and software updates to multiple Firebox X appliances in real time or as a scheduled task
- Manage security subscriptions including Gateway AntiVirus/Intrusion Prevention Service, spamBlocker, or WebBlocker from a single, unified interface with no additional software to purchase or maintain
- Gain system-wide visibility with real-time monitoring to accelerate root cause analysis and take instant preventive or corrective action

### Single Management Console

WatchGuard System Manager offers centralized management of multiple Firebox X appliances and security subscriptions (including global configuration and firmware updates for Firebox X Edge endpoints). You can view all the appliances in your enterprise at a glance, and launch monitoring, configuration, logging, or reporting tools for precise control of any device or service.

### Intuitive User Interface

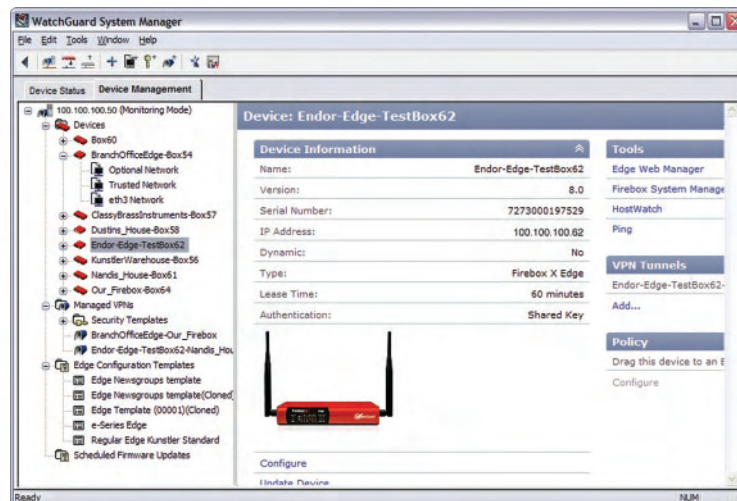
WatchGuard System Manager is visually oriented and thoughtfully laid out. Out-of-box templates and wizards incorporate security best practices, which save time and speed provisioning. Sophisticated, granular controls are also available to empower administrators with more specific requirements.

### Simple Drag-and-Drop Management

WatchGuard drag-and-drop management shrinks the time and effort needed to create centrally managed security configurations and branch office VPN tunnels among WatchGuard appliances – even those with dynamic IP addresses. View, edit, and create security policies and tunnels across the enterprise from a single management console. All WSM components can be installed on a single PC for a complete solution on one workstation – with no need for installation and maintenance of dedicated gateway appliances or third-party database software.

### Interactive Real-time Monitoring

Better comprehension yields better security. Clear, visually driven interfaces and plain-language log messages make it easy to validate the security policy and to make changes or adjustments as desired. Interactive tools enable you to take instant preventive or diagnostic action directly from the monitoring interface, without the need to open separate configuration screens.



**Security Management Without the Confusion** You can view all the appliances you manage at a glance, and launch monitoring, configuration, logging, or reporting tools for pinpoint control.

## Logging and Reporting

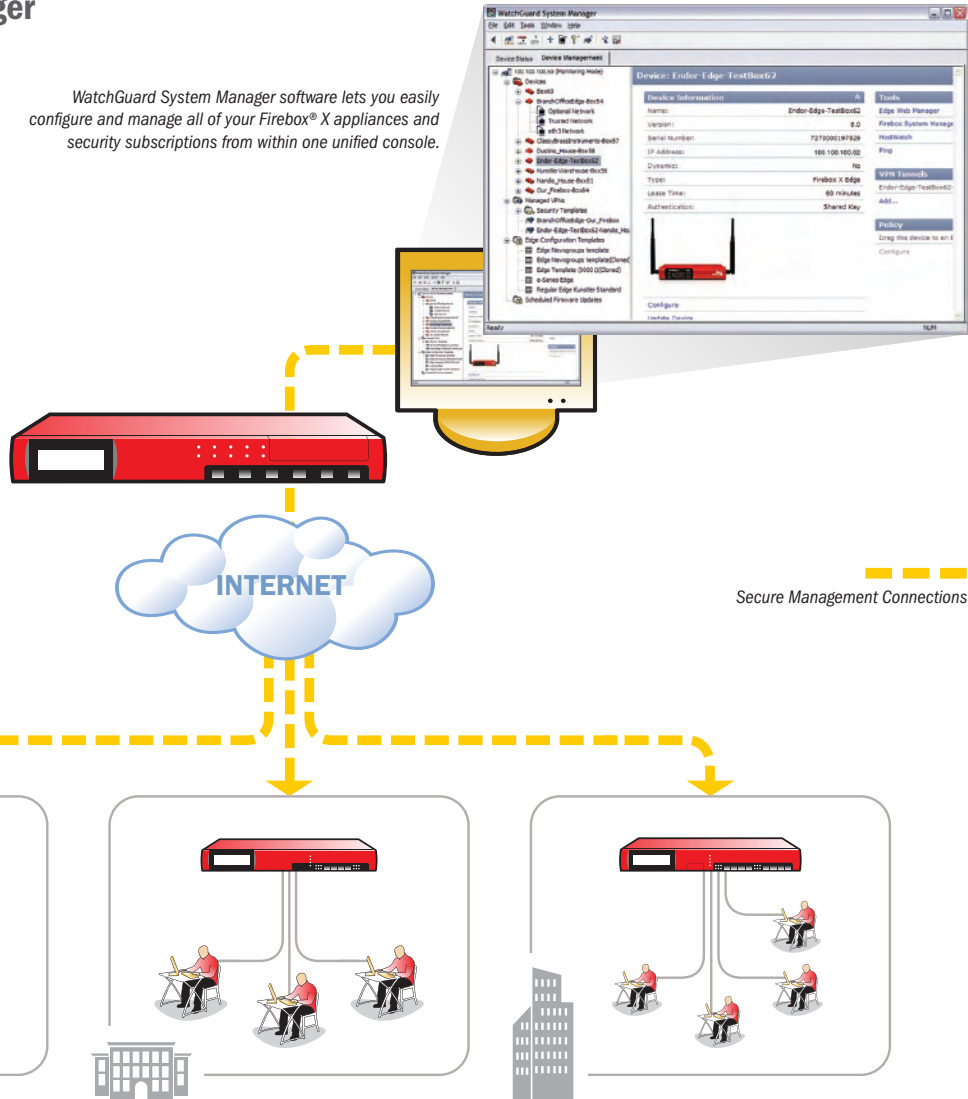
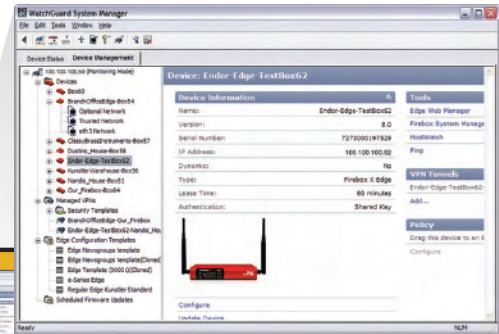
Secure, centralized logging and comprehensive reporting are included in WatchGuard System Manager, bundled with all Firebox® X Peak™ and Core™ models – with no extra logging or reporting modules to buy. XML-based, human-readable logging is easy to understand, allows integration with third party reporting tools, and is sent over a reliable, encrypted connection for security and continuity of log data. Full-featured reporting facilitates in-depth analysis of network activity, security threats, and user behaviors.

## LiveSecurity® Integration

WatchGuard System Manager seamlessly integrates with LiveSecurity Services to provide up-to-the-minute vulnerability alerts and product notifications for all products, including Firebox X Peak, Core, and Edge. Customized LiveSecurity data is displayed within the WSM interface, allowing administrators to better manage their environments.

## Centralized Management with WatchGuard System Manager

WatchGuard System Manager software lets you easily configure and manage all of your Firebox® X appliances and security subscriptions from within one unified console.



Secure Management Connections

For more information about WatchGuard System Manager and additional features and services, visit [www.watchguard.com/products/wsm.asp](http://www.watchguard.com/products/wsm.asp)

ADDRESS: 505 Fifth Avenue South, Suite 500, Seattle, WA 98104 · WEB: [www.watchguard.com](http://www.watchguard.com) · U.S. SALES: 1.800.734.9905 · INTERNATIONAL SALES: +1.206.613.0895

No express or implied warranties are provided for herein. All specifications are subject to change and any expected future products, features or functionality will be provided on an if and when available basis. ©2008 WatchGuard Technologies, Inc. All rights reserved. WatchGuard, the WatchGuard Logo, Firebox, Peak, and Core are either trademarks or registered trademarks of WatchGuard Technologies, Inc. in the United States and/or other countries. All other trademarks and tradenames are the property of their respective owners. Part No. WGCE66318\_011008